

SPM55 series
Industrial Touchpads

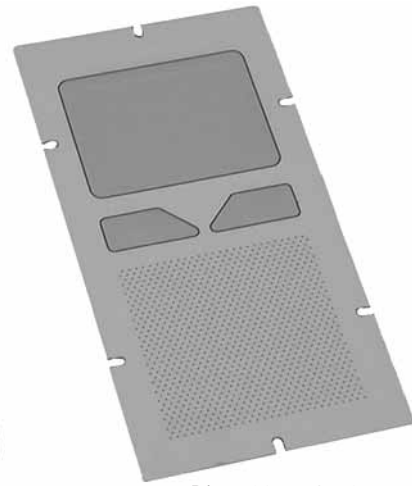
FEATURES

- Sealing to IP65
- PS/2 or USB Compatible
- 55 x 39 mm sensing area
- Two IP65 sealed membrane switches
- Field Distortion Technology

Touchpads



Dim : 106x204x42 mm
Weight : 1Kg



Dim : 92.5x180x30 mm
Weight : 0.5Kg

General Description

The SPM55 series is specially designed for harsh industrial environment applications. They are a precise and accurate cursor control devices, which operate at all angles and require no cleaning. The touchpad uses the Field Distortion Technology to sense the presence of your finger. This device is not pressure sensitive.

Enclosed Touchpad

The SPM55S1 is housed in a steel enclosure and is completely dust and waterproof up to the IP65 protection rating. Because of its slim line it can be placed in 19" drawer or can be used as a stand alone desktop unit.

Panel Mount Touchpad

Intended for back panel mounting into users' cabinet or panel. A metal cover on the backside protects the electronic parts. Operation of the touchpad is possible at all angles.

Specification

Enclosure (SPM55S): Steel
Carrier Plate (SPM55N): Aluminium
Front Layer: Polyester
Sensing Area: 55 x 39 mm
Tracking speed: 250 mm/sec. max.
Resolution: 480 ± 50 counts per inch

Switches: Short travel switches approx. 1.4N
Protection class: IP65
Operating Temp.: 0°C to +50°C
Storage Temp.: -20°C to +60°C
Shielded cable: straight 1.6m long

Ordering Information

Protocol	Panel Mount	Enclosed
PS/2	SPM55N1	SPM55S1
USB	SPM55N1USB	SPM55S1USB