

Cable and Chassis Kits for ECM-5410 & ECM-5610 Series Mini Modules

Cable Kits

ACC-54102-1 Cable Kit for ECM-5410 Series

Description
Daughter Board supports Audio/2USB/TV
Cable 7P/2.54mm - 6P/Mini Din - 6P/Mini Din 20cm Ivory PS/2 KB & Mouse
Flat Cable 10P/2.54mm - 10P/2.54 15cm w/- DuPont Header
Flat Cable 40P/2.54mm - 40P/2.54mm - 40P/2.54mm 50cm ATA-33
Flat Cable 16P/2.54mm - 16P/2.54mm 15cm
Flat Cable DB-25P - IDC 26P/2.54mm 30cm Gray w/o bracket
Flat Cable DB-9P*4 - IDC 40P/2.54 18 cm Gray
Flat Cable IDC 34P/2.54 - 34P/2.54 -34P/2.54 50cm Gray for FDD
Flat Cable D-Sub (F) 15P - IDC 16P/2.54 15cm Rainbow
Cable RJ-45 8P (M) - 8P (F) 16cm 10/100Base-Tx Extension Chassis kits

ACC-56102-1 Cable Kit for ECM-5610 Series

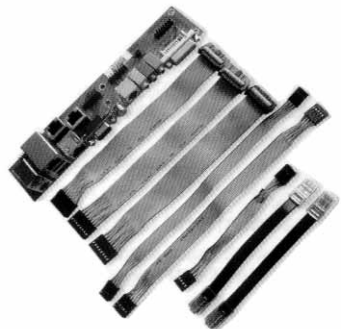
Description
Daughter Board supports Audio/2USB/TV
Cable 7P/2.54mm - 6P/Mini Din - 6P/Mini Din 20cm Ivory PS/2 KB & Mouse
Flat Cable 10P/2.54mm - 10P/2.54 15cm w/- DuPont Header
Flat Cable 40P/2.54mm - 40P/2.54mm - 40P/2.54mm 45cm ATA-66
Flat Cable 16P/2.54mm - 16P/2.54mm 15cm
Flat Cable DB-25P - IDC 26P/2.54mm 30cm Gray w/o bracket
Flat Cable DB-9P*4 - IDC 40P/2.54 18 cm Gray
Flat Cable IDC 34P/2.54 - 34P/2.54 - 34P/2.54 50cm Gray for FDD
Flat Cable D-Sub (F) 15P - IDC 16P/2.54 15cm Rainbow
Cable RJ-45 8P (M) - 8P (F) 16cm 10/100Base-Tx Extension Chassis kits



Chassis Kits

ACC-54103-1 Chassis Kit for ECM-5410 Series

Description
Daughter Board AUX-005 Rev.A2 w/o DVI & TV
Cable RJ-45 8P-8P (M) 9cm 10/100Base-Tx extension
Flat Cable Dupont 8P/2.54mm - Dupont 8P/2.54mm 10cm
Flat Cable Dupont 8P/2.54mm - Dupont 8P/2.54mm 20cm
Flat Cable Dupont 10P/2.54mm - Dupont 10P/2.54mm 20cm
Flat Cable IDC 16P/2.54mm - Dupont 16P/2.54mm 16cm



ACC-56103-1 Chassis Kit for ECM-5610 Series

Description
Daughter Board AUX-005 Rev.A2
Cable RJ-45 8P-8P (M) 9cm 10/100Base-Tx extension
Flat Cable Dupont 8P/2.54mm - Dupont 8P/2.54mm 10cm
Flat Cable Dupont 8P/2.54mm - Dupont 8P/2.54mm 20cm
Flat Cable Dupont 10P/2.54mm - Dupont 10P/2.54mm 20cm
Flat Cable IDC 16P/2.54mm - Dupont 16P/2.54mm 16cm

EPM-1520-24

EPM-1530-24

EPM-1520-18

EPM-1530-18

EPM-1520/1530-24

24-bit LVDS Transmitter/Receiver Modules

Features

- Supports 20 to 85MHz Shift Clock
- Up to 2.38Gbps Throughput
- Up to 297.5Mbytes/sec Bandwidth
- 345mV (typ.) Swing LVDS devices for Low EMI
- Compatible with TIA/EIA-644 LVDS standard
- Flat Panel/CRT Interface
 - NS DS90C385 or equivalent transmitter chipset (EPM-1520-24)
 - NS DS90C384 or equivalent transmitter chipset (EPM-1530-24)
 - Supports VGA, SVGA, XGA and single/dual pixel SXGA displays
- 20-pin Hirose DF14A-20-P-1.25H connector
- Power supply voltage: +5V (& +12V for inverter)
- Operating Temperature: 0°C to 60°C
- Dimension: 65mm x 50mm



Ordering Information

EPM-1520-24

24-bit LVDS Transmitter Module

EPM-1530-24

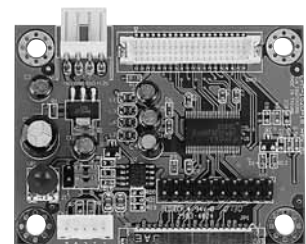
24-bit LVDS Receiver Module

EPM-1520/1530-18

18-bit LVDS Transmitter/Receiver Modules

Features

- Supports 20 to 85MHz Shift Clock
- Up to 2.38Gbps Throughput
- Up to 297.5Mbytes/sec. Bandwidth
- 345mV (typ.) Swing LVDS devices for Low EMI
- Compatible with TIA/EIA-644 LVDS standard
- Flat Panel/CRT Interface
 - NS DS90C365 or equivalent transmitter chipset (EPM-1520-18)
 - NS DS90C364 or equivalent transmitter chipset (EPM-1530-18)
 - Supports VGA, SVGA, XGA and single/dual pixel SXGA displays
- 20-pin Hirose DF14A-20-P-1.25H connector
- Power supply voltage: +5V (& +12V for inverter)
- Operating Temperature: 0°C to 60°C
- Dimension: 65mm x 50mm



Ordering Information

EPM-1520-18

18-bit LVDS Transmitter Module

EPM-1530-18

18-bit LVDS Receiver Module

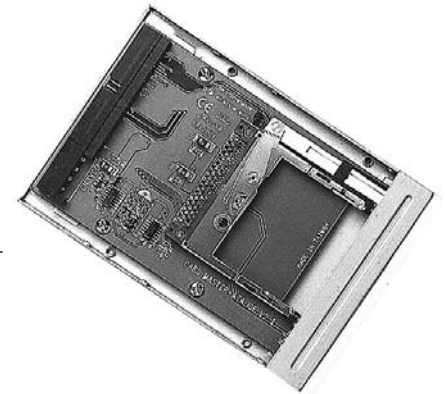
EPM-1110-F
EPM-1110-F2
EPM-1110-FD

EPM-1110-F

3.5" Front Access ATA to IDE Module with Card Protection Circuit

Features

- Complies with PCMCIA v.2.1/JEIDA 4.1 and CompactFlash Standard
- ATA/CompactFlash to Standard IDE Interface
- 40-pin IDE connector
- 4-pin standard power connector
- Supports Type I/II/III ATA Flash, ATA HDD and CompactFlash cards through a 68-pin
- PCMCIA connector or a 50-pin CompactFlash connector
- One Front slot
- Power Requirement: +5V @ 75mA
- Operating Temperature: 0°C to 60°C
- Dimension: 152mm x 101.6mm x 25.4mm

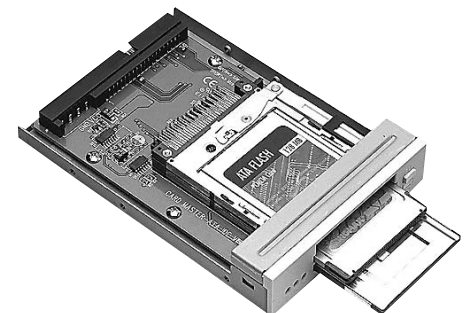


EPM-1110-F2

3.5" Front Access ATA to IDE Module with 2 Slots, Card Protection Circuit

Features

- Complies with PCMCIA v.2.1/JEIDA 4.1 and CompactFlash Standard
- ATA/CompactFlash to Standard IDE Interface
- 40-pin IDE connector
- 4-pin standard power connector
- Supports Type I/II/III ATA Flash, ATA HDD and CompactFlash cards through a 68-pin PCMCIA connector or a 50-pin CompactFlash connector
- Two Front slots
- Power Requirement: +5V @ 75mA
- Operating Temperature: 0°C to 60°C
- Dimension: 152mm x 101.6mm x 25.4mm



EPM-1110-FD

3.5" Front Access ATA to IDE Module with Floppy

Features

- Complies with PCMCIA v.2.1/JEIDA 4.1 and CompactFlash Standard
- ATA/CompactFlash to Standard IDE Interface
- 40-pin IDE connector
- 4-pin standard power connector
- Supports Type I/II/III ATA Flash, ATA HDD and CompactFlash cards through a 68-pin PCMCIA connector or a 50-pin CompactFlash connector
- One Front slot
- 2 in 1, combining one FDD and one ATA to IDE drive
- Power Requirement: +5V @ 230mA
- Operating Temperature: 0°C to 60°C
- Dimension: 152mm x 101.6mm x 25.4mm

