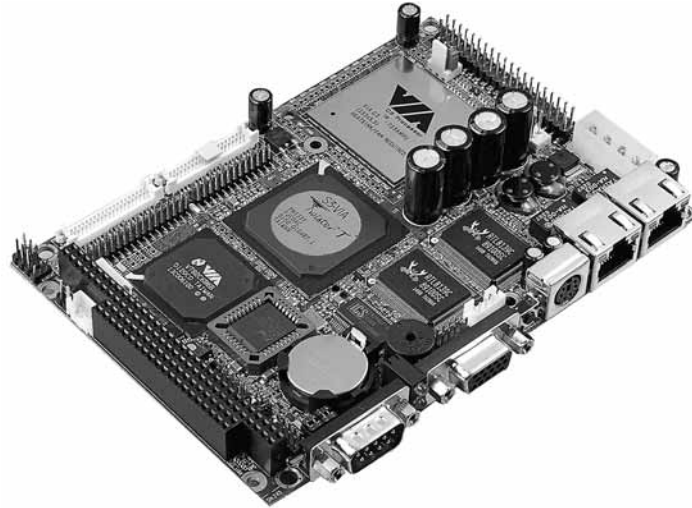


ECM-3610

VIA EDEN ESP6000
Micro Module



FEATURES

- 3.5" FDD size
- VIA Eden ESP6000 (667MHz) EBGA Low-power CPU on-board
- Dual Intel 10/100Base-Tx Fast Ethernet
- 36-bit Flat Panels & Dual-channel LVDS interfaces
- Compact Flash Type I/II Socket
- VIA VT8606 chipset with integrated Savage4 AGP 4X Graphics

Ordering Information

- ECM-3610
VIA Eden ESP6000 667 MHz micro module
- ECM-3610L
Same as above with single 10/100Base-Tx Ethernet

SPECIFICATIONS

General Functions

CPU	Onboard VIA Eden ESP6000 (667 MHz) EBGA Low-power CPU (other speeds available by request)
BIOS	Award 256K Flash BIOS
Chipset	VIA VT8606/VT82C686B
I/O Chipset	VIA VT82C686B
Memory	Onboard one 144-pin SODIMM socket supports up to 512MB SDRAM
Enhanced IDE	Supports two IDE devices. Supports Ultra DMA/100 mode.
FDD interface	Supports two floppy disk drives
Parallel port	Configured to LPT1, LPT2, LPT3 or disabled. Supports SPP, ECP and EPP modes
Serial port	One external DB-9 connector supports 1 x RS-232, one internal header supports RS-232/422/485 x 1.
IR interface	IR connector supports one IrDA Tx/Rx header
KB/Mouse connector	External mini-DIN PS/2 Keyboard/Mouse connector x1
USB connectors	5 x 2 header onboard supports dual USB ports
DMA channels	7
Interrupt levels	15
Watchdog timer	Can generate a system reset, IRQ10/11 or NMI. Software selectable time out interval (2 sec ~ 255 sec., 1sec./step)
Power management	Supports ATX power supply. I/O peripheral devices support power saving and doze/standby/suspend modes APM 1.2 compliant
Expansion interface	One 16-bit PC/104 connector

Flat Panel/CRT

Chipset	VIA VT8606, 128-bit GUI, 3D engine
Display memory	8/16/32MB frame buffer using system memory
Display type	Supports non-interlaced CRT and 36-bit DSTN/ TFT LCD displays. Can display both CRT and flat panel display simultaneously
Resolution	Supports up to 1280 x 1024 @ 24 bpp

Audio Interface

Chipset	VIA VT82C686B
Audio Codec	AD1881A
Audio controller	AC97 ver. 2.0 compliant interface, Multi-stream Direct Sound and Direct Sound 3D acceleration
Audio interface	Mic in, Line in, CD audio in, Line out

Ethernet Interface

Chipset	Dual Realtek 8139C PCI-bus Ethernet controllers PCI
Ethernet interface	10/100 Mbps
Remote boot ROM	For diskless operation

SSD Interface

	One CF socket supports Type I/II Compact Flash Card
--	---

Mechanical and Environmental

Power requirement	+5V @ 2.9A (with VIA Eden 667MHz & 128MB SDRAM)
Operating temperature	0 to 60°C
Board size	146mm x 101mm
Weight	0.4kg

ECM-3615

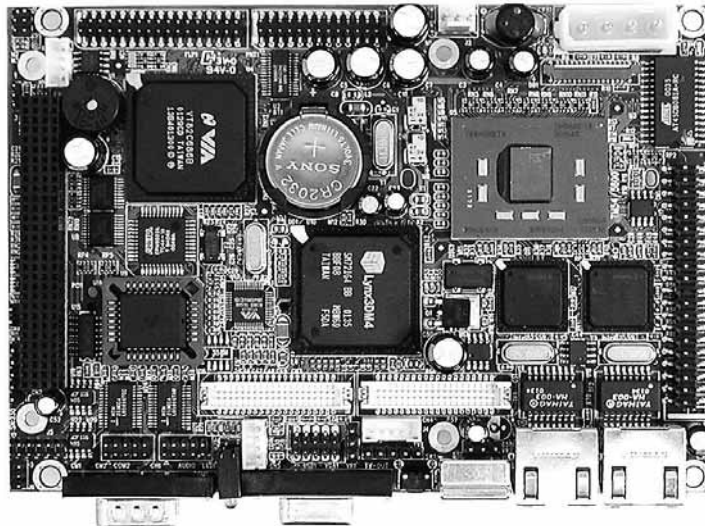
Transmeta Crusoe TM5400
500MHz Micro Module

FEATURES

- 3.5" FDD size
- Transmeta Crusoe TM5400 low-power CPU on-board
- LongRun Power-saving Technology
- Dual Intel 10/100Base-Tx Fast Ethernet
- Dual Flat Panel Interfaces
- Compact Flash Type I/II Socket
- 3D Graphics Accelerator

Ordering Information

- ECM-3615
Transmeta TM5400 500 MHz
Micro module
- ECM-3615L
Same as above with Single
10/100Base-TX Ethernet



SPECIFICATIONS

General Functions

CPU	Onboard Transmeta Crusoe TM5400 500MHz Low-power CPU
BIOS	Award 256K Flash BIOS
Chipset	Transmeta Crusoe TM5400/VIA VT82686B
I/O Chipset	VIA VT82686B
Memory	Onboard one 144-pin SODIMM socket supports up to 256MB SDRAM
Enhanced IDE	Supports two IDE devices. Supports Ultra DMA/100 mode.
FDD interface	Supports two floppy disk drives
Parallel port	Configured to LPT1, LPT2, LPT3 or disabled. Supports SPP, ECP and EPP modes
Serial port	One external DB-9 connector supports 1 x RS-232, one internal header supports RS-232/422/485 x 1.
IR interface	IR connector supports one IrDA Tx/Rx header
KB/Mouse connector	External mini-DIN PS/2 Keyboard/Mouse connector x1
USB connectors	5 x 2 header onboard supports dual USB ports
DMA channels	7
Interrupt levels	15
Watchdog timer	Can generate a system reset, IRQ10/11 or NMI. Software selectable time out interval (2 sec - 255 sec., 1sec./step)
Power management	I/O peripheral devices support power saving and doze/standby/suspend modes APM 1.2 compliant
Expansion interface	One 32-bit PC/104+ (PCI only) connect

Flat Panel/CRT Interface

Chipset	SMI Lynx3DM SM721, 128-bit GUI engine
Display memory	4MB of SGRAM frame buffer
Display type	Supports non-interlaced CRT and up to 18-bit TFT LCD displays. Can display both CRT and flat panel display simultaneously
Resolution	Supports up to 1024 x 768 @ 24 bpp

Audio Interface

Chipset	VIA VT82686B
Audio Codec	VT1612A
Audio controller	AC97 ver. 2.0 compliant interface, Multi-stream Direct Sound and Direct Sound 3D acceleration
Audio interface	Mic in, Line in, CD audio in, Line out

Ethernet Interface

Chipset	Dual Intel 82599ER Ethernet controllers
Ethernet interface	Onboard PCI 10/100 Mbps
Remote boot ROM	For diskless operation

SSD Interface

	One CF socket supports Type I/II Compact Flash Card
--	---

Mechanical and Environmental

Power requirement	+5V @ 2.3A (with Transmeta Crusoe TM5400 500MHz & 128MB SDRAM)
Operating temperature	0 to 60°C
Board size	146mm x 101mm
Weight	0.4kg

ECM-3410

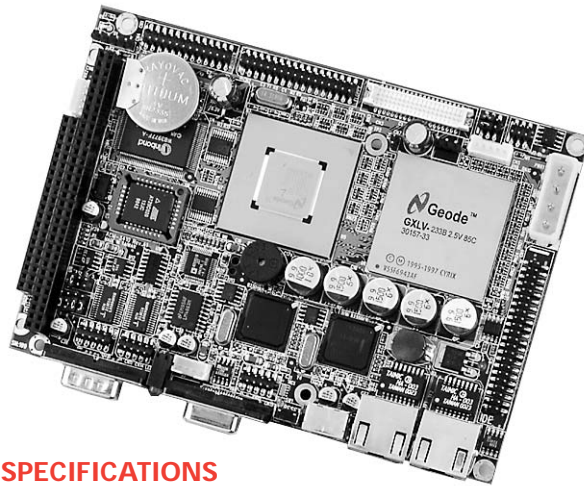
NS Geode GX1 Micro Module

FEATURES

- 3.5" FDD size
- NS Geode GX1 low-power CPU
- Dual Intel 10/100Base-Tx Fast Ethernet
- Flat Panel Interface
- Compact Flash Type I/II Socket

Ordering Information

- ECM-3410
NS Geode GX1 300MHz Micro Module with LCD, AC97 Audio & Dual 10/100Base-Tx Ethernet
- ECM-3410L
Same as above, but with single 10/100Base-Tx Ethernet
- ECM-3410N
Same as above, but without Ethernet



SPECIFICATIONS

General Functions

CPU	Onboard NS Geode GX1 300MHz (other speeds available by request)
BIOS	Award 256K Flash BIOS
Chipset	NSGeode CS5530A
I/O Chipset	Winbond W83977T-A
Memory	Onboard one 144-pin SODIMM socket supports up to 256MB SDRAM
Enhanced IDE	Supports two IDE drives. Supports Ultra DMA/33 Mode
FDD interface	Supports two floppy disk drives, 5.25" (360KB and 1.2MB) and/or 3.5" (720KB, 1.44MB and 2.88MB)
Parallel port	Configured to LPT1, LPT2, LPT3 or disabled. Supports SPP, ECP and EPP modes
Serial port	One external DB-9 connector supports 1 x RS-232, one internal header supports RS-232/422/485 x 1. Ports can be configured as COM1, COM2, COM3, COM4 or disabled individually (16C550 equivalent)
IR interface	IR connector supports one IrDA Tx/Rx header
KB/Mouse connector	External mini-DIN PS/2 Keyboard/Mouse connector x 1
USB connectors	5 x 2 header onboard supports dual USB ports
DMA channels	7
Interrupt levels	15
Watchdog timer	Can generate a system reset. IRQ15 or NMI. Software selectable time-out interval (16 sec. ~ 127min., 30sec./step)
Power management	I/O peripheral devices support power saving and doze/standby/suspend modes APM 1.2 compliant
Expansion Interface	One 16-bit PC/104 connector

Flat Panel/CRT

Chipset	NS Geode CS5530A
Display memory	Shared display memory up to 4MB
Display type	Supports non-interlaced CRT and up to 18-bit TFT LCD displays. Can display both CRT and flat panel display simultaneously
Resolution	Supports up to 1024 x 768

Audio

Chipset	NS Geode CS5530A
Audio controller	AC97 ver. 2.0 compliant interface, Multi-stream Direct Sound and Direct Sound 3D acceleration
Audio interface	Mic in, Line in, CD audio in, Line out, speaker L, speaker R

Ethernet

Chipset	Dual Intel 82599ER Ethernet controller
Ethernet interface	Onboard PCI 100/10 Mbps
Remote boot ROM	For diskless operation

SSD Interface

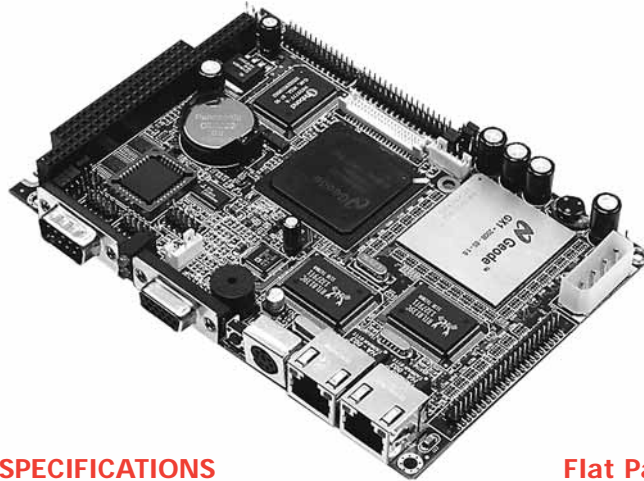
One CF socket supports Type I/II Compact Flash Card

Mechanical and Environmental

Power requirement	+5V @ 1.3A (with NS Geode GX1 300MHz & 128MB SDRAM)
Operating temperature	0 to 60°C
Board size	146mm x 101mm
Weight	0.4kg

ECM-3412

NS Geode GX1 Micro Module



FEATURES

- Onboard NS Geode GX1 300MHz CPU
- 2 COM/2 USB/1 Parallel/1 IrDA port
- Dual Realtek RTL8139C
- 10/100Base-Tx Fast Ethernet
- Supports CRT and 18-bit TFT panels
- Compact Flash Type I/II Socket
- Fanless & Single 5V operation

Ordering Information

- ECM-3412
NS Geode GX1 300MHz Micro Module with LCD, AC97 Audio & Dual 10/100Base-Tx Ethernet
- ECM-3412L
Same as above, but with Single 10/100Base-Tx Ethernet

SPECIFICATIONS

General Functions

CPU	Onboard NS Geode GX1 300 MHz (other speeds available by request)
BIOS	Award 256K Flash BIOS
Chipset	NSGeode CS5530A
I/O Chipset	Winbond W83977F-A
Memory	Onboard one 144-pin SODIMM socket supports up to 256MB SDRAM
Enhanced IDE	Supports two EIDE devices. Supports (Ultra DMA/33)
FDD interface	Supports two floppy disk drives
Parallel port	One bi-directional parallel port. Supports SPP, ECP and EPP modes
Serial port	One RS-232, one RS-232/422/485
IrDA interface	115Kbps, IrDA 1.0 compliant
KB/Mouse connector	Supports PS/2 Keyboard & Mouse
USB connectors	2 x USB 1.0 ports
Watchdog timer	Reset/IRQx; (16 sec ~ 127min, 30sec./step)
Expansion Interface	One 16-bit PC/104 connector

Flat Panel/CRT

Chipset	NS Geode CS5530A
Display memory	1/2/4MB frame buffering using system memory
Resolution	CRT mode: 1280 x 1024 @ 8 bpp(60Hz) LCD/Simultaneous mode: 1024 x 768 @ 16 bpp (60Hz)
VGA/LCD interface	PCI bus VGA/LCD interface Supports 9/12/18-bit TFT panels

Audio Interface

Chipset	NS Geode CS5530A
AC97 Codec	AD1881A
Audio interface	Mic in, Line in, CD audio in, Line out

Ethernet

Chipset	Dual Realtek RTL8139C
Ethernet interface	IEEE 802.3u 100Base-Tx Fast Ethernet
Remote boot ROM	Optional built-in boot ROM in Flash BIOS

SSD Interface

One Compact Flash Type I/II socket

Mechanical and Environmental

Power requirement	+5V @ 1.3A (with NS Geode GX1 300MHz & 128MB SDRAM)
Operating temperature	0 to 60°C
Board size	146mm x 101mm
Weight	0.2kg