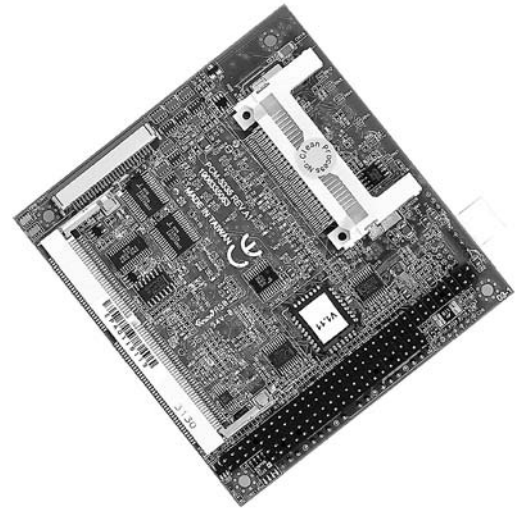
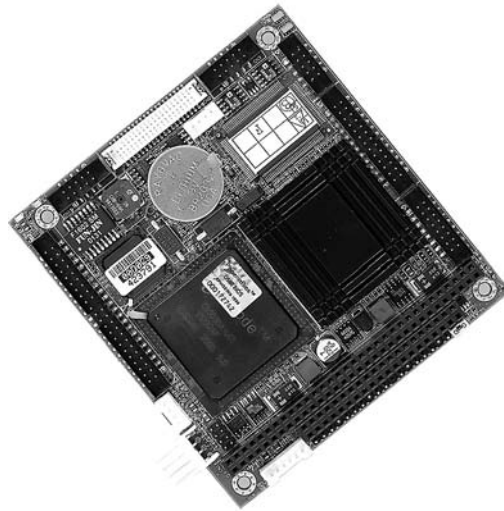


PCM-5335

Geode GX1-300 PC/104
CPU Module, LCD, SSD & Ethernet

FEATURES

- Embedded Low Power NS Geode GX1-300MHz processor
- 18bit TFT LCD support
- 10/100 Mbps Ethernet
- Compact Flash Socket



SPECIFICATIONS

General Functions

CPU	Embedded Low Power 2.0V NS GX1-300MHz
System memory	SDRAM SODIMM x 1, Max 128
BIOS	Award 256 KB Flash Socket
Chipset	NS CS5530A
I/O Chipset	Winbond W83977F. Full 16-bit decoded
Enhanced IDE	Supports one hard drive
FDD interface	Supports one floppy disk drive, Configured to LPT1, LPT2, LPT3 or disabled
Parallel port	Supports SPP, ECP and EPP modes
Serial port	Two RS-232 ports
USB	2 USB ports
IrDA	1 x 115Kbps SIR, IrDA 1.0 compliant
KB/Mouse connector	1 x K/B, 1 x Mouse
Battery	Lithium-battery for data retention
DMA channels	7
Interrupt levels	5
Watchdog timer	1.6 sec interval Watchdog timer
Power Management	APM 1.2

Flat Panel/CRT Interface

Chipset	NS CS5530A LCD/CRT Control
Display memory	Shared memory up to 4MB
Display Type	Supports CRT and TFT flat panel displays
Resolution	1024x768 @ 16bpp (CRT) 1024x768 @ 18bpp (LCD)
LCD interface	18 bit TFT LCD panel

SSD Interface

One Compact Flash Socket

Ethernet Interface

Ethernet interfaces	Intel 82559ER, 10/100 Mbps Ethernet
---------------------	-------------------------------------

Mechanical and Environmental

Power supply	2.0A @ +5V, Max
Operating temperature	0 to 60°C
Board size	90mm x 96mm
Weight	0.11kg

ECM-1340

STPC Elite/Consumer II PC/
104 CPU Module

FEATURES

- Onboard STPC Elite or Consumer II 133MHz SoC
- SMI Lynx EM + SM712 2D Graphics Accelerator with Embedded 2MB SGRAM
- Supports NTSC/PAL TV Output (ECM-1340C)
- Support CRT, 24-bit TFT panels
- 10/100 Mbps Ethernet
- M-Systems DiskOnChip Socket Onboard
- 2 COM/1 Parallel/1 IrDA Port

Ordering Information

- ECM-1340
STPC Elite 133MHz PC/104 CPU module with LCD, & single 10/100Base-TX Ethernet
- ECM-1340C
STPC Elite 133MHz PC/104 CPU module with VGA, TV out & single 10/100Base-TX Ethernet



SPECIFICATIONS

General Functions

CPU	ECM-1340: Onboard STPC Elite 133MHz ECM-1340C: Onboard STPC Consumer II 133MHz
System memory	One SODIMM socket supports up to 64MB SDRAM
BIOS	Award 256 KB Flash BIOS
Chipset	STPC Elite/Consumer II
I/O Chipset	Winbond W83977F
Enhanced IDE	Supports two EIDE (PIO mode 4)
FDD interface	Supports two floppy disk drives
Parallel port	Supports one LPT
Serial port	Two RS-232 ports
KB/Mouse connector	Supports PS/2 keyboard and mouse
D/I/O	4-bit TTL DI and 4-bit TTL DO
Watchdog timer	Reset/IRQx; 16 sec. ~ 127 min. and 30 sec./step
Expansion	One PC/104 connector

Flat Panel/CRT Interface

Chipset	SMI LunxEM+SM712 or STPC Consumer II (ECM-1340 only) integrated 2D graphics engine
Display memory	2MB SGRAM frame buffer or 1/2/4 MB frame buffer using system memory (ECM-1340C only)
Resolution	CRT mode: 1280 x 1024 @ 24bpp (60Hz) LCD/Simultaneous mode: 1280 x 1024 @ 16bpp (60Hz)
VGA/LCD interface	(ECM-1340 only) PCI bus VGA/LCD interface Supports 9/12/18/24-bit TFT and 16/24-bit colour DSTN panels
TV out	(ECM-1340 only) STPC Consumer II integrated TV encoder supports both NTSC/PAL Supports both S-Video and Composite Video

SSD Interface

One M-Systems DiskOnChip

Ethernet Interface

Chipset	Realtek RTL8101L Ethernet
Ethernet interfaces	IEEE 802.3u 100Base-Tx Fast Ethernet compatible
Remote boot ROM	Optional built-in boot ROM in Flash BIOS

Mechanical and Environmental

Power requirement	+5V @ 1.3A(with STPC Consumer II 133MHz and 64MB SDRAM)
Power type	AT
Operating temperature	0 to 60°C
Board size	90mm x 96mm
Weight	0.2kg

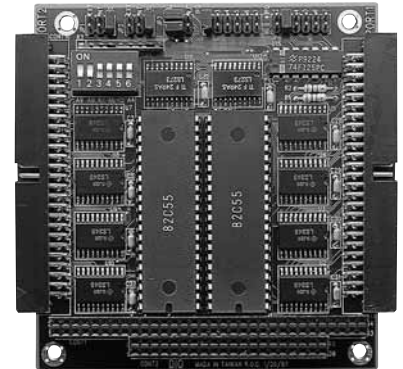
EPM-1410
EPM-1420

EPM-1410

48-bit Digital I/O PC/104 Module

Features

- Dual 48-bit digital I/O lines
- Group emulates a 8255 PPI mode 0
- Bit 0 of port C can generate an interrupt to IRQ 2, 3, 4, 5, 6 or 7
- Interrupt trigger on rising/falling edge
- Output status read back
- Pin-compatible with OPTO-22 I/O module racks
- Transfer rate: Typical: 300 KB/sec.
Maximum: 400 KB/sec.
- Buffered circuits for higher driving capacity than 8255
- Digital Output: Logic Level 0: 0.5V max. @ 24mA
Logic level 1: 2.0V min. @15mA
- Digital Input: Logic level 0: 0.8V max.
Logic level 1: 2.0V min.
- Connector: 50-pin box header for I/O port
- Power Requirement: single +5V @ 600mA
- Operating Temperature: -20°C to 50°C

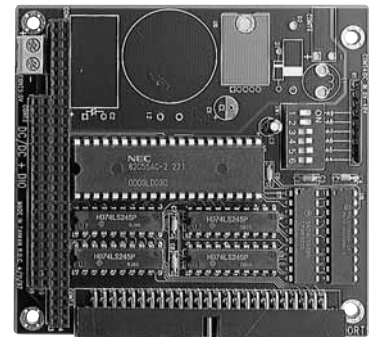


EPM-1420

24-bit Digital I/O PC/104 Module

Features

- 24-bit digital I/O lines
- Group emulates a 8255 PPI mode 0
- Interrupt trigger on rising/falling edge
- Output status read back
- Pin-compatible with OPTO-22 I/O module racks
- Transfer rate: Typical: 300 KB/sec.
Maximum: 400 KB/sec.
- Digital Output: Logic Level 0: 0.5V max. @ 24mA
Logic level 1: 2.0V min. @15mA
- Digital Input: Logic level 0: 0.8V max.
Logic level 1: 2.0V min.
- Connector: 50-pin box header for I/O port
- Power Requirement: +5V @ 600mA
- Operating Temperature: 0°C to 50°C



EPM-1110

EPM-1112

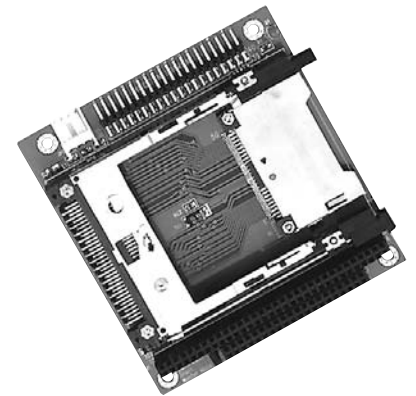
EPM-1620

EPM-1110

PCMCIA/CompactFlash ATA to IDE PC/104 Module

Features

- Complies with PCMCIA v.2.1/JEIDA 4.1 and CompactFlash Standard
- ATA/CompactFlash to Standard IDE Interface
- 40-pin IDE connector
- 4-pin standard power connector
- Supports Type I/II/III ATA Flash, ATA HDD and CompactFlash cards through a 68-pin PCMCIA connector or a 50-pin CompactFlash connector
- PC/104 form factor
- Power Requirement: +5V @ 75mA
- Operating Temperature: 0°C to 60°C
- Dimension: 96mm x 90mm



EPM-1112

Dual Slot PCMCIA PC/104 Module

Features

- Complies with PCMCIA v.2.1/JEIDA 4.1 and CompactFlash Standard
- PCMCIA Socket (with ejector) accepts
 - Type I: Flash/SRAM/ROM memory
 - Type II: Fax/Modem/Network/SCSI card
 - Type III: ATA Mass Storage
- 16-bit data bus
- Programmable 32KB SMD Boot Flash BIOS
- Busy Status LED
- Features two PCMCIA drives
- Supports bootable function from Linear FlashCard, ATA HDD and ATA Flash
- Power Requirement: +5V @ 70mA
- Operating Temperature: 0°C to 60°C
- Dimension: 96mm x 90mm



EPM-1620

Multi RS-232 PC/104 Module

Features

- Supports up to 4 x RS-232 Synchronous ports
- 2 x 16550 UARTS
 - Supports: Tx/D, Rx/D, RTS, CTS, DTR, DSR, DCD, GND
 - Interrupt select: 2,3,5,5,7
 - RS-232 Modem control signals
 - I/O Address: 100h to 300h
- Baudrate: up to 115.2 Kbps
- Power Requirement: +5V @ 250mA
- Operating Temperature: -20°C to 55°C
- Dimension: 96mm x 90mm

